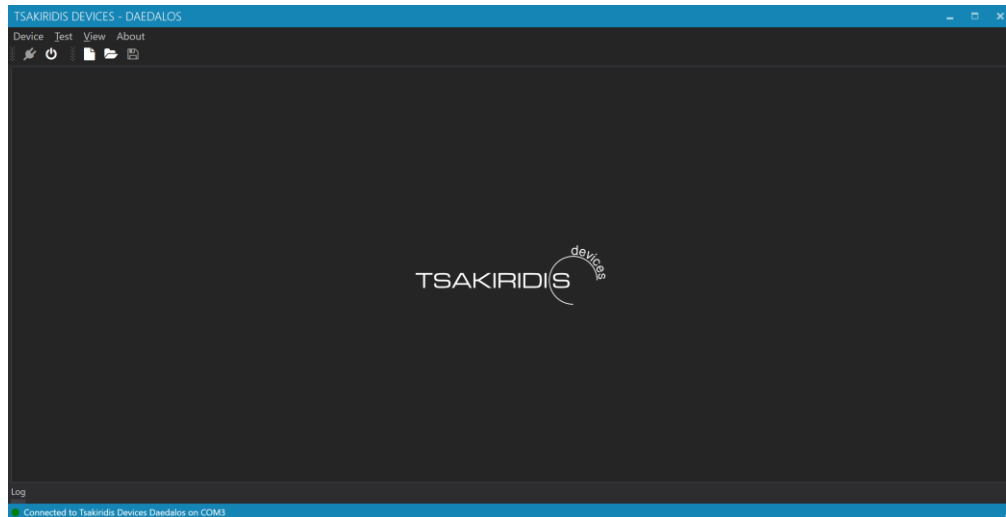


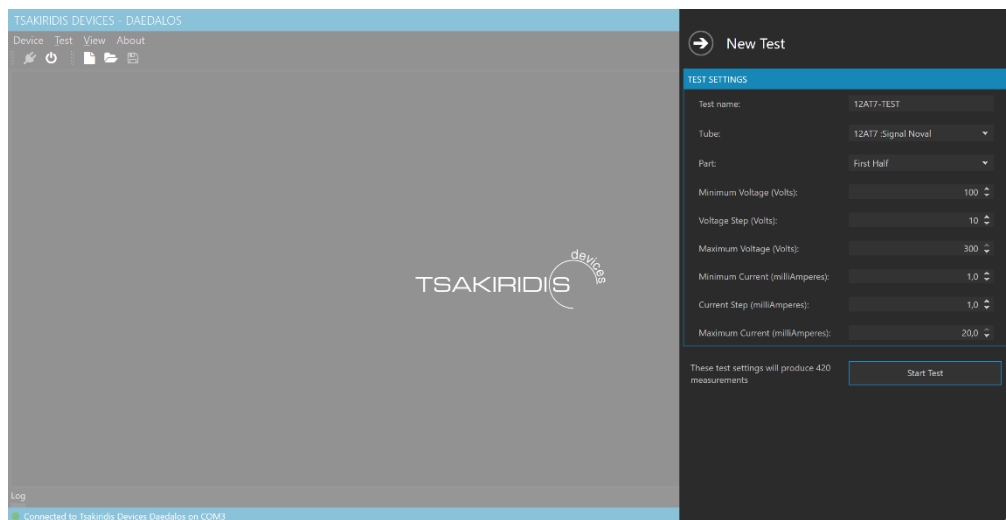
TSAKIRIDIS DEVICES DAEDALOS APP SETUP AND USE GUIDE

1. Please make sure that your Tsakiridis Devices Daedalos has the latest firmware. You can find the latest firmware package on the Daedalos webpage (http://www.tsakiridis-devices.com/test_evaluation_daedalos.html). The package contains instructions on how to install the firmware on the device.
2. Put your Daedalos in online mode and launch the Daedalos application.



The application will scan the COM ports of your computer and will try to discover your Daedalos device. In case of a successful discovery and connection, the application will indicate that in its status bar.

3. Start a new test by selecting the respecting button from the application's toolbar or menu item.



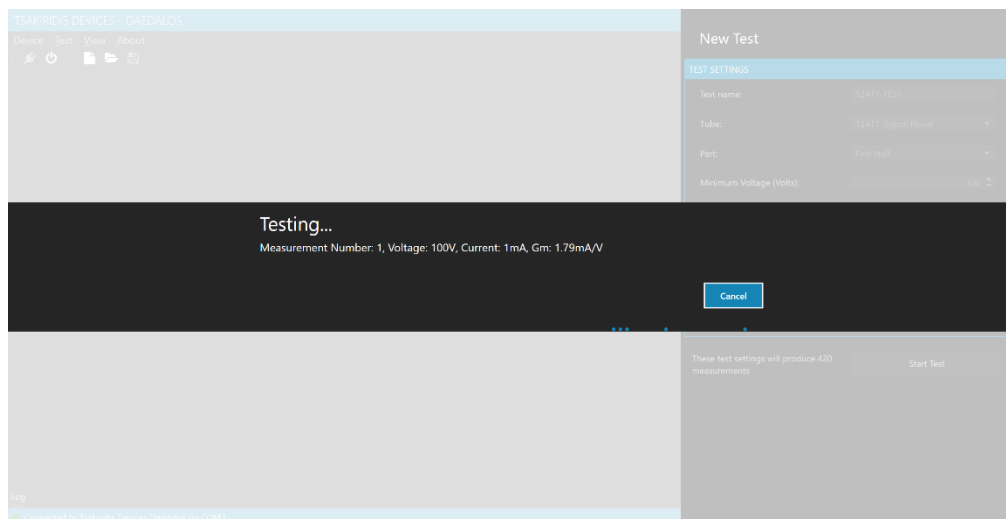
Enter a test name and select the tube type you wish to test. Select the tube's part to test and enter the desired min/step/max values for voltage and current. Start the test by hitting the "Start Test".

4. Your Daedalos device will prompt you to insert the tube to be tested in the proper socket by blinking the respecting socket light indication.



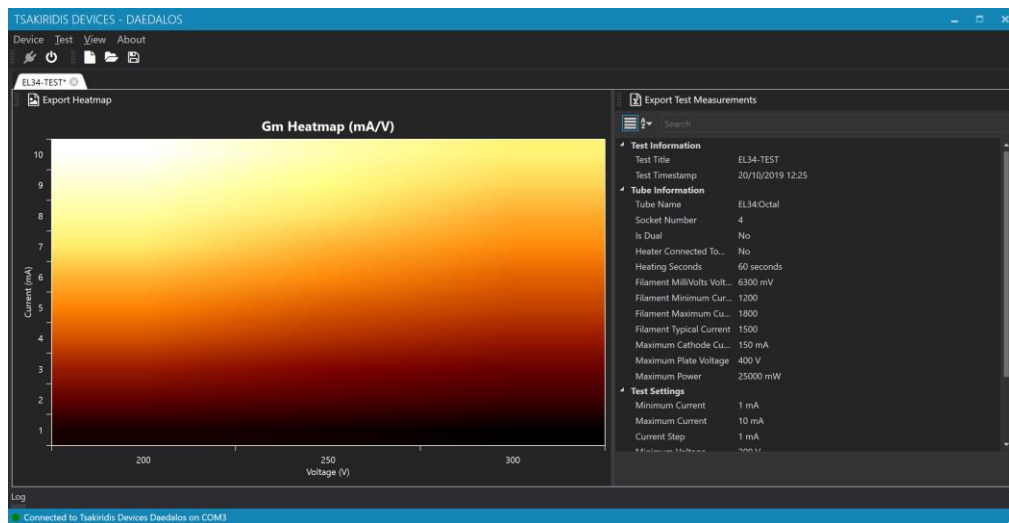
Insert the tube to the indicated socket and press the “Select” button on your Daedalos device.

5. The tube warm up process will begin and after that your Daedalos will start streaming the test results to the application.



The process can be cancelled at any time.

6. Once the test process is over, the app will calculate and present the “heatmap” of the measured values which is a graphic representation of the measured Gm values for specific voltage and current values.



The raw measurements can be exported in excel format and the heatmap can be exported in an image format. Furthermore, the whole measurement process (testing parameters and measured values) can be saved in “.daedalos” file which can be loaded from the application at a later time, even without having the device connected to it.